

Nestled on a quiet street just off Kingsway, find a collection of 47 boutique residences developed by Fully Homes. Sleek yet inviting, the building exterior is a perfect balance of modern architecture with warm accents of brick and wood paneling. Complimented by Scandinavian-inspired interiors and exclusive rooftop amenities, it is designed to elevate the urban lifestyle. With a range of 1, 2 and 3 bedroom residences available, Clarendon Heights offers smart, refined living spaces perfect for any family at any stage of life.



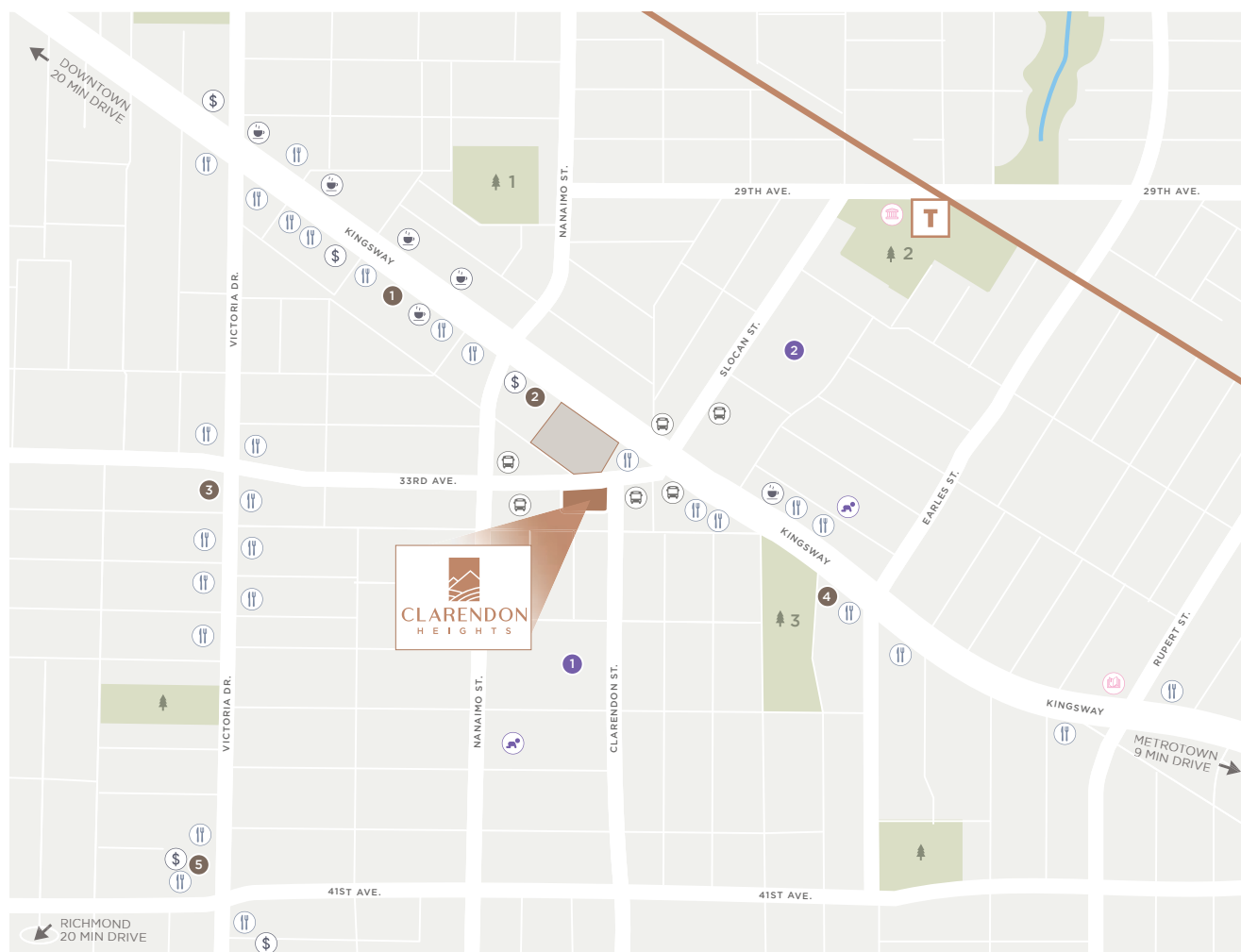


LOCATION IS EVERYTHING

MODERN CONVENIENCE

We believe that life should make sense. Where we live, where we go, and what we do should be congruent. While our daily activities and errands should be seamless, we always want to come home to a quiet space to recharge. Clarendon Heights offers just that — homes that are tucked away in a serene family neighbourhood but are minutes away from restaurants, stores, schools, and transit that can take you anywhere in Metro Vancouver.





29TH AVENUE STATION

BUS STOP

RESTAURANT

CAFÉ

COMMUNITY HALL

PUBLIC LIBRARY

CHILD DAY CARE

SHOPPING/GROCERY

1. T&T Supermarket
2. Shoppers Drug Mart
3. 88 Supermarket
4. Great Two Supermarket
5. London Drugs

BANKING

1. RBC Royal Bank
2. TD Canada Trust
3. Scotiabank
4. CIBC
5. VanCity Credit Union
6. BMO Bank of Montreal

EDUCATION

1. Cunningham Elementary
2. John Norquay Elementary



PARK

1. General Brock Park
2. Slocan Park
3. Norquay Park

FUTURE COMMUNITY DEVELOPMENT





EXTEND YOUR LIVING SPACE

KING OF THE HILL

Clarendon Heights was given its name for a reason — it sits on top of the hill and oversees the neighbourhood. Whether you are relaxing on your balcony, or enjoying the sunset on the rooftop patio, you can revel in views as far as the North Shore Mountains. This is how chic living should be — having the ability to encounter the wonder of the city from the edge of your own home.



ACTUAL VIEW FROM ROOF TOP PATIO



PRIVATE PATIO

All of our garden units offer the luxury of a private patio. A place to socialize or unwind in the fresh air after a day of work. Ranging from 286 to 590 sq.ft., the spaces are a perfect extension of your home, bridging the inside and out.

PRIVATE BALCONY

Sip your morning coffee or savour a glass of wine at night on your own private balcony. Each unit offers up to 191 sq.ft. of outdoor space to enjoy alone or with close company.



INSPIRING VIEW

With the city and mountains as your backdrop, enjoy upscale ambience from the comfort of your own home. Large double-paned windows allow the glowing light of Vancouver to pour in and illuminate your space.





PERFECT FOR FAMILY LIVING LARGE AND FUNCTIONAL SPACES

Our perfectly crafted 1, 2, and 3 bedroom units are larger than the average boutique residential units in the area, so you can find the perfect balance of convenience and functionality. The open floor plans balance form and function perfectly, creating bright spaces filled with natural light. With careful planning and thoroughly considered space design, a home at Clarendon Heights is where you will want to spend time with family.





SOPHISTICATED CHARM SCANDINAVIAN INSPIRED INTERIORS

The homes at Clarendon Heights are warm and modern with a Scandinavian feel. Each unit features durable yet appealing quartz countertops, unglazed porcelain backsplashes, Whirlpool appliances, stainless steel and chrome finishings, and an overall feeling of spaciousness. Each resident will have the option of choosing from two designer-selected colour palettes: Light or Dark. Each palette is neutral, so putting your personal touch into your home is easy. With these modern and timeless elements, any unit at Clarendon Heights will be the perfect space to create your own unique home.

SERENE ENSUITE

At Clarendon Heights, our bathrooms evoke that “spa feeling” we always wish we could bring home with us. With plenty of vanity and cabinet space, you can keep your bathroom uncluttered — a place of serenity.







ATTENTION TO DETAIL EXCEPTIONAL DESIGNER TOUCHES

Seamlessly functional spaces that are stunning come from using quality materials, honest workmanship and carefully selected fixtures. Together they create a harmony at home that you will recognize. This is the standard for Fully Homes — to create this feeling using efficient layouts, inspiring kitchens, and spacious living areas.

EFFICIENT LAYOUT

Come home to open floor plans that are fluid and practical.

SPACIOUS LIVING AREA

Carefully planned living spaces to maximize your home.

INSPIRING KITCHEN

An attractive, practically designed space to motivate all of your culinary activities.

SPA-LIKE ENSUITE

A retreat in your own home — specially crafted for optimal relaxation.

ROOM WITH A VIEW

Relish the surrounding Vancouver landscape while at home.

PRIVATE BALCONY / PATIO

A moment outside is just steps away with a private outdoor space to take in.

BEYOND YOUR WALLS

IN-BUILDING AMENITIES

Chic city living does not have to be confined by your apartment walls. Though already situated in a buzzing community of its own, the amenities that Clarendon Heights offers support its own micro-community. With a beautifully landscaped entrance and other communal spaces, the building offers many places outside of your own home for moments with family, friends, and even yourself.







MORE THAN YOU CAN IMAGINE INCOMPARABLE EXPERIENCE

Sometimes, even with the city lifestyle within reach, we just want to enjoy downtime in our own homes without hopping into your car. Expand your living space to the outdoors at Clarendon Heights.

PARTY & BBQ

Entertain or cook for one — the rooftop patio has plenty of space for social gatherings.

YOGA & TAI CHI

Morning meditations have never been more accessible.

TODDLER PLAY AREA

Room for your kids to “just be kids” in a safe and secure environment.

PLANTING GARDEN

Grow your own vegetables or flowers in our community garden.

GREENSPACE

Take in the neighbourhood while sitting among lush, landscaped surroundings.

VIEWS

Experience the full panoramic views of the North Shore Mountains to Downtown Vancouver.





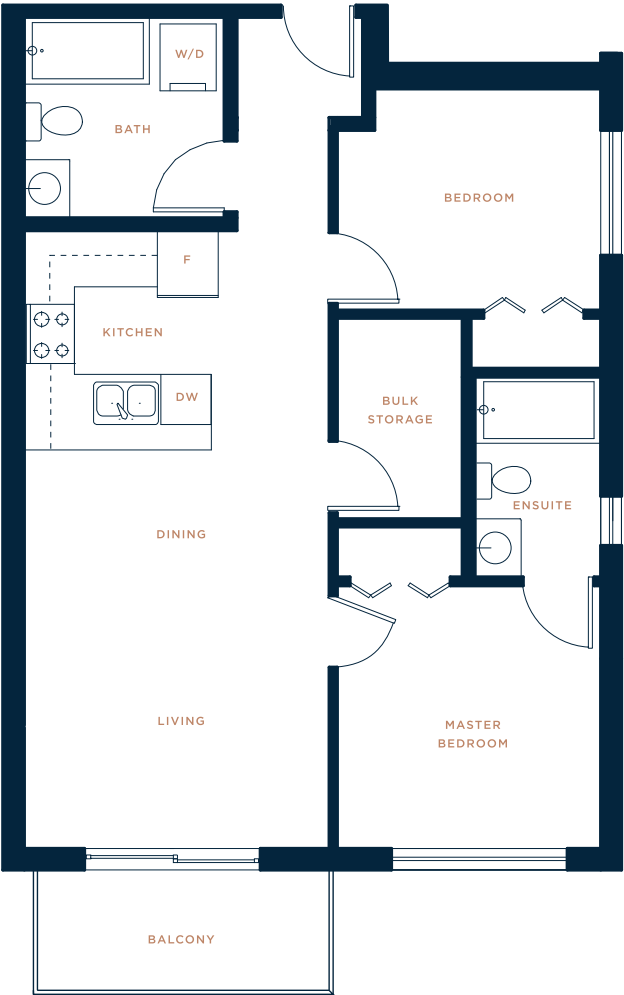


WELCOME HOME

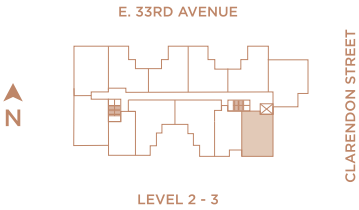
Prime location with hill-top views, stunning design with quality materials and exceptional amenities, all these attributes make Clarendon Heights a rare offering in the Vancouver market.

FEATURED
FLOOR PLAN

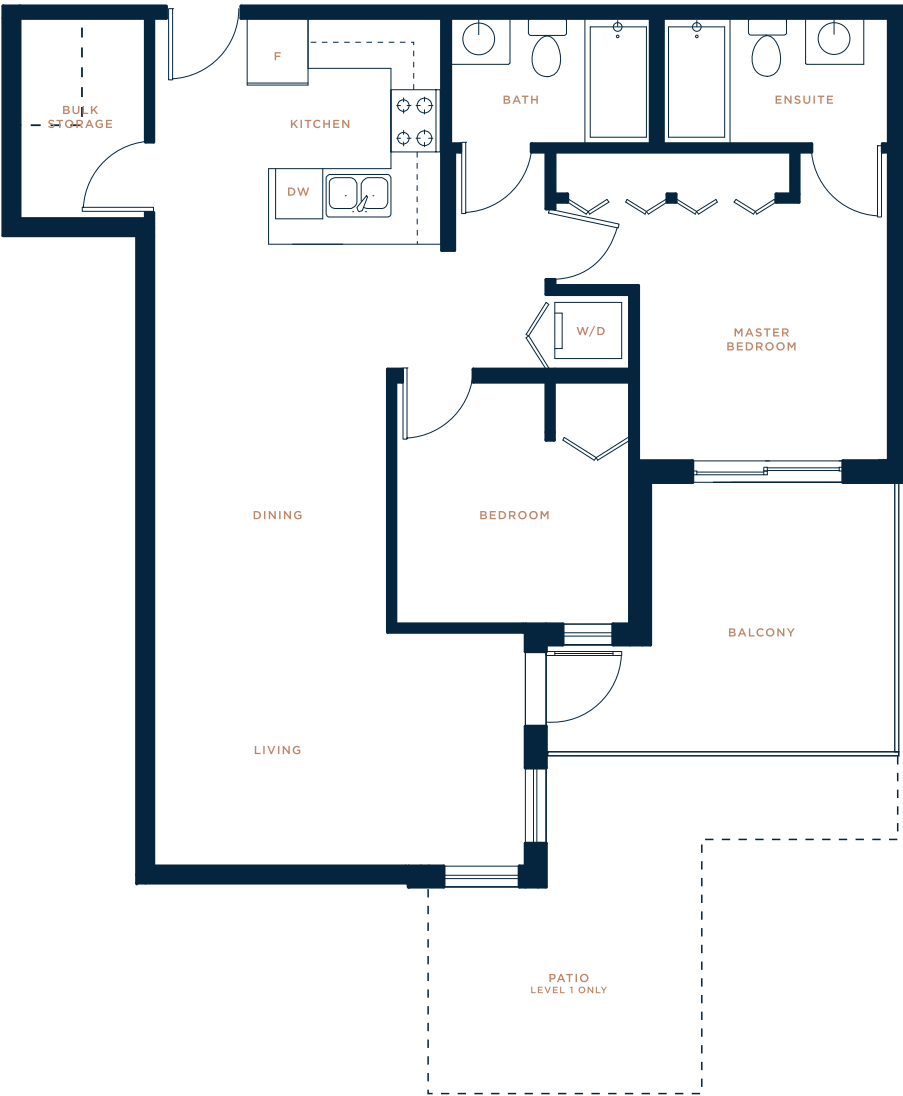
B2



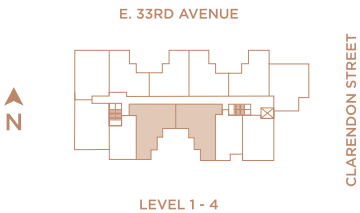
2 BED + 2 BATH
INDOOR: 807 SQ. FT.
OUTDOOR: 64 SQ. FT.



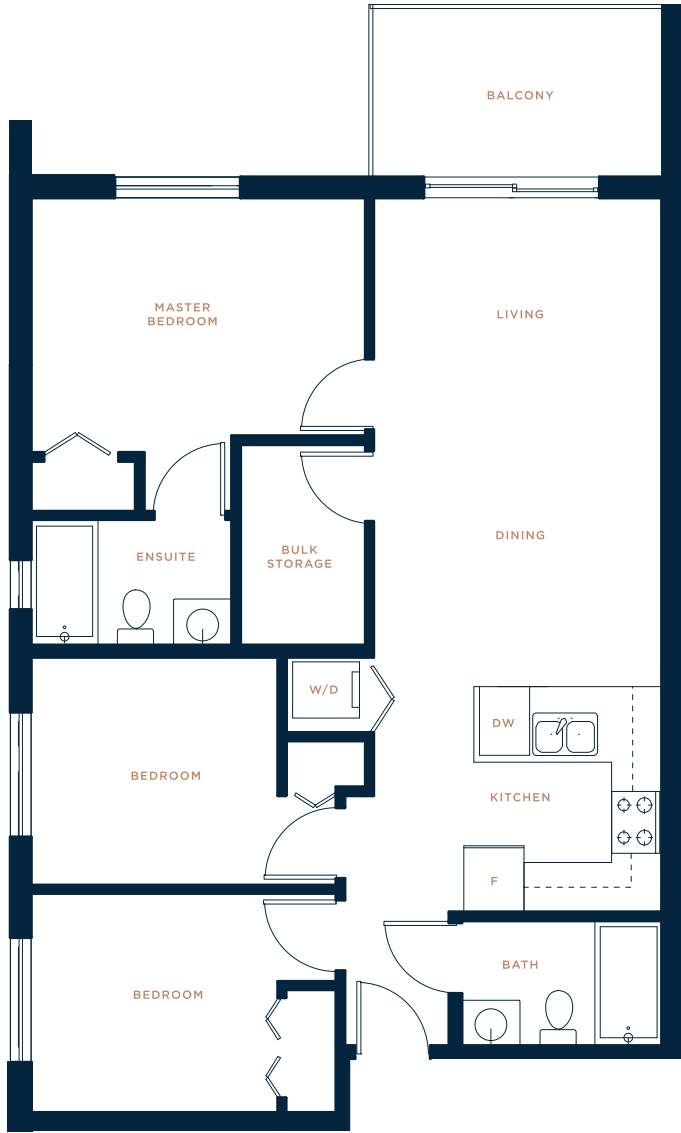
FEATURED
FLOOR PLAN E



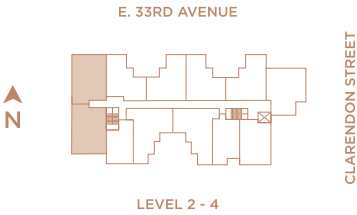
2 BED + 2 BATH
INDOOR: 888 - 894 SQ. FT.
OUTDOOR: 118 - 461 SQ. FT.



FEATURED
FLOOR PLAN J

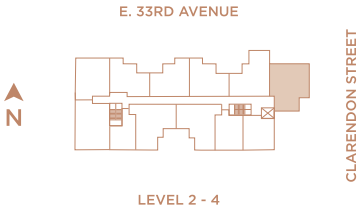


3 BED + 2 BATH
INDOOR: 954 - 956 SQ. FT.
OUTDOOR: 59 - 62 SQ. FT.





3 BED + 3 BATH
INDOOR: 1084 - 1091 SQ. FT.
OUTDOOR: 95 - 108 SQ. FT.



CLARENDON STREET

**DELIVERING HIGH QUALITY
LIVING SPACES**

FULLY HOMES

Fully Homes is a real estate developer that specializes in multi-family development. Previously known as Fully Development, the company was incorporated and came to be rebranded as Fully Homes in 2018. The founders of Fully Homes have continued their family's path of over 20 years of residential and commercial development experience. The goal of Fully Homes is to deliver quality homes to all clients that are beyond their expectations. Clarendon Heights will carry forth those same family values.



ETERNITY — BURNABY, BC



INFINITY — BURNABY, BC



STAR COAST — ASIA

